

# The Great Escape

## Grant Funding

### Key Information and Top Tips for Success



Art Fund\_

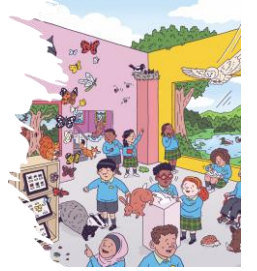


Supported using public funding by  
**ARTS COUNCIL  
ENGLAND**



Image credit: © Luke McGarry, 2022

# Overview - Key Information and Top Tips for Success



## Summary of what we will cover in the slides

- ☑ What and why - The Great Escape grants
- ☑ Eligibility
- ☑ The timetable
- ☑ The application process
- ☑ Some top tips to assist you in applying
- ☑ Where to access pre-application advice and find out more about and engage in **The Great Escape project**

# What - Key Information and Top Tips for Success



## ? The Great Escape grants - what

- to engage with schools and families in your local community to champion galleries, museums and historic house collections
- grants administered through Museum Development England (MDE)
- advice and support from your regional Museum Development provider
- investment from Art Fund and Arts Council England in partnership with MDE
- grants of up to £3,000 per organisation or per consortia partner organisation
- grants of up to £24,000 for consortia / max £3,000 per consortia partner organisation
- permitted costs include up to 50% of award to back fill project staff costs

*e.g. to cover the costs of existing staff with required expertise / skills e.g. community engagement or learning officers, collections and curatorial staff spending their time on delivering the project*

# What - Key Information and Top Tips for Success



## **?** The Great Escape grants - what

- Connecting with **local primary schools**: Build or expand one or more connections to a local primary school near to you and or offer The Great Escape workshop(s) (online or in person) to primary age classes aged 7–11-years-old at some point in the 2022/23 academic year
- Connect with **families**: Engage and widen participation from families with children, including those between 7-11 years-old in your organisation’s activities online or in person
- Connect and work other **local community groups** or organisations: Build your relationships and or partnerships with local community groups to support your engagement with primary schools and families with children aged 7-11 years-old
- **Earth Day activity**: Invite the schools/ families/ visitors, and community to join you on Earth Day 2023 (Saturday 22 April) for a participative event at your organisation or in your community that connects back to the workshops.

# What and Why - Key Information and Top Tips for Success



## The Great Escape grants - why

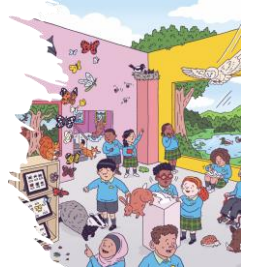
- connect with local schools, youth-led organisations and families
- explore wildlife in your collections, exhibitions and spaces
- engage in a large scale participative event on Earth Day 2023 (Saturday 22<sup>nd</sup> April)

Be part of a high profile UK wide project connecting with:

- The BBC's new 5-part documentary series hosted by David Attenborough on biodiversity
- exciting, high profile partnerships with well-known artists and naturalists
- resources, support, skills and expertise provided through the project by Art Fund



# Overview - Key Information and Top Tips for Success



## The Great Escape grants – eligibility

This grant funding is for Galleries, Museum and Historic Houses

*including organisations that operate a museum, Historic House or gallery e.g. Local Authorities or University*

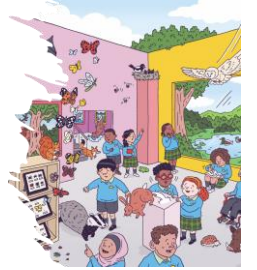
There are three essential eligibility factors:

1. Have a public presence e.g., a building **open to the public or a public outcome** e.g., a public art programme
2. Can demonstrate that they **operate to standards of best practice** within the sector (e.g., through Arts Council England Museum Accreditation Scheme)
3. Be organisations who are **registered for public interest** – these include Charities, Community Incorporated Organisations, Local Authorities and Universities

*NB: If your organisation is Accredited or is listed as Working Towards Accreditation then this formally recognises your eligibility for this grant scheme.*

*National Portfolio Organisations are eligible to apply.*

# Overview - Key Information and Top Tips for Success



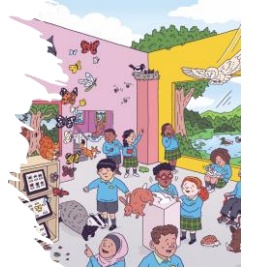
## The Great Escape grants – ineligible

Unfortunately, the following organisations are ineligible to apply:

- Organisations that exist to make profit, including Private Limited Companies, Public Limited Companies, Unlimited Companies, or Sole Traders
- General Partnerships, Limited Partnerships, or Limited Liability Partnerships
- Commercial organisations
- Artists' groups
- Hospitals/healthcare settings
- Places of worship
- Organisations with a focus on music, drama, dance, and art forms outside the visual arts

If you are still unsure about your organisation(s) eligibility to apply, please contact Art Fund direct at [thegreatescapeproject@artfund.org](mailto:thegreatescapeproject@artfund.org)

# Overview - Key Information and Top Tips for Success



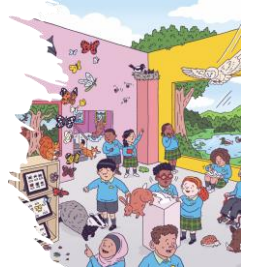
## The Great Escape grants – the timetable

- The Great Escape grant programme launch **9am 27 September 2022**
- Application deadline: 9am **Wednesday 2 November 2022**
- Outcome letters issued by: Monday 14 November 2022
- Grant acceptance deadline by: Monday 21 November 2022 with initial grant payment of 90% made within 30 days of receipt
- Projects can start from **Monday 21 November 2022**
- Projects completed by **Monday 1 May 2023**
- Submission of grant claim paperwork deadline is **Friday 5 May 2023** with the balance grant payment of up to 10% made within 30 days of receipt subject to satisfactory claim





# Overview - Key Information and Top Tips for Success



## The Great Escape grants – application process

**Applications can only be received through the online form:**

[https://www.smartsurvey.co.uk/s/The Great Escape Grant App/](https://www.smartsurvey.co.uk/s/The_Great_Escape_Grant_App/)



*We know that online forms can be a right pain ...*

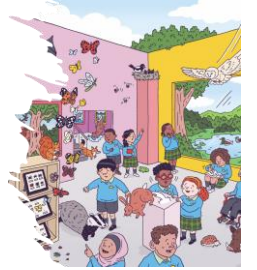
*Please don't jump into the online form first – we have an offline version which can help you to prepare your copy and gather the required information.*

*Please don't let the tech issues overcome your great ideas for grant funding – let us know if you are having tech issues by speaking to your MDO or dropping us an email on [museum.data@bristol.gov.uk](mailto:museum.data@bristol.gov.uk)*

For problems with the functionality of the online application process (not grant content guidance and advice) please contact us on [museum.data@bristol.gov.uk](mailto:museum.data@bristol.gov.uk)

Applications submitted after the specified deadline will not be accepted. Please contact us if you have access requirements and need an alternative format for applying.

# Overview - Key Information and Top Tips for Success



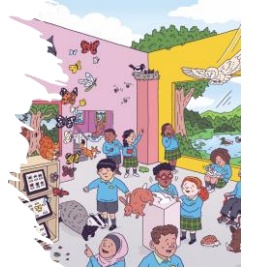
## Top Tips

- Always **read the guidance** first as most questions will be answered in this document
- Encourage colleagues to join a **briefing session** held by any MDE team, or contact them directly with any questions
- Check out the **application questions document** – this will set out the questions asked within the online form

### **Prepare for inputting by having to hand:**

- (If relevant) Your museums' Accreditation number (or 'T' Accreditation number if Working Towards)
- Check if you are in an Arts Council England Priority Place or Levelling Up area first (see link in guidance)
- Work out the approximate staff and no. of volunteers / volunteer hours that will deliver the project
- If you are planning to work with a school or youth organisation you will need their name and postcode, .....*and ensure to discuss the project with them before applying*

# Overview - Key Information and Top Tips for Success



## Where to access pre-application advice and find out more:

<a href="#"><u>South East</u></a>	<a href="mailto:helen.derbyshire@southeastmuseums.org"><u>helen.derbyshire@southeastmuseums.org</u></a>
<a href="#"><u>South West</u></a>	<a href="mailto:museum.development@bristol.gov.uk"><u>museum.development@bristol.gov.uk</u></a>
<a href="#"><u>London</u></a>	<a href="mailto:btravers@museumoflondon.org.uk"><u>btravers@museumoflondon.org.uk</u></a>
<a href="#"><u>East of England</u></a>	<a href="mailto:sharemuseumseast@museums.norfolk.gov.uk"><u>sharemuseumseast@museums.norfolk.gov.uk</u></a>
<a href="#"><u>East Midlands</u></a>	<a href="mailto:MDEM@leics.gov.uk"><u>MDEM@leics.gov.uk</u></a>
<a href="#"><u>West Midlands</u></a>	<a href="mailto:wmmd@ironbridge.org.uk"><u>wmmd@ironbridge.org.uk</u></a>
<a href="#"><u>North East</u></a>	<a href="mailto:anna.mcnab@twmuseums.org.uk"><u>anna.mcnab@twmuseums.org.uk</u></a>
<a href="#"><u>North West</u></a>	<a href="mailto:kaye.hardyman@manchester.ac.uk"><u>kaye.hardyman@manchester.ac.uk</u></a>
<a href="#"><u>Yorkshire</u></a>	<a href="mailto:MDYOffice@ymt.org.uk"><u>MDYOffice@ymt.org.uk</u></a>

**\*new\*** email address [thegreatescapeproject@artfund.org](mailto:thegreatescapeproject@artfund.org)



and for ideas, inspiration and resources on The Great Escape contact [Art Fund](#) and visit [The Great Escape](#) website to register your interest

**Art Fund\_**